

Patient information

- 39 year old male with untreated hypertension, high cholesterol & a strong family history of Coronary Artery Disease
- After lifting weights, felt chest pain.
- Exercise stress test was normal.
- However, he was still worried and came to HSC for MSCT Coronary Angiography which showed coronary calcium score of 2.3 and 80-90% narrowing in one of the major heart arteries.

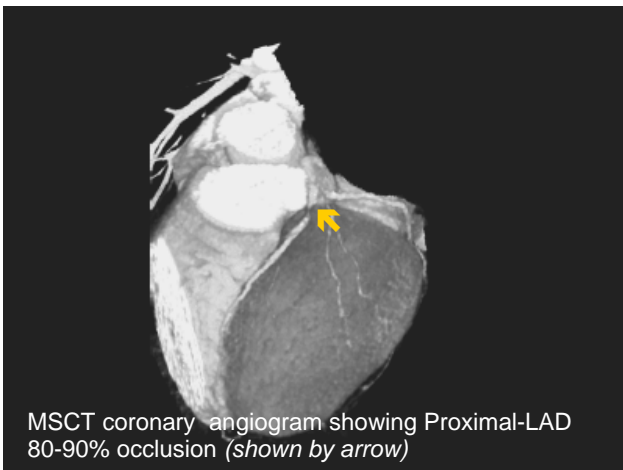
MSCT Coronary Angiogram Results:

Left Main: Normal
LAD: Proximal LAD 80-90% stenosis
LCx: Normal
RCA: Normal

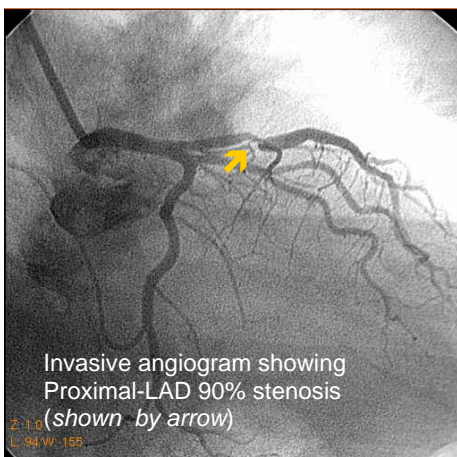
The patient was then advised to undergo a PTCA/ Stent to the proximal LAD.

Findings on invasive Coronary Angiography:

Left Main: Normal
LAD: Proximal LAD 90% stenosis
LCx: Normal
RCA: Normal



MSCT coronary angiogram showing Proximal-LAD 80-90% occlusion (shown by arrow)



Invasive angiogram showing Proximal-LAD 90% stenosis (shown by arrow)

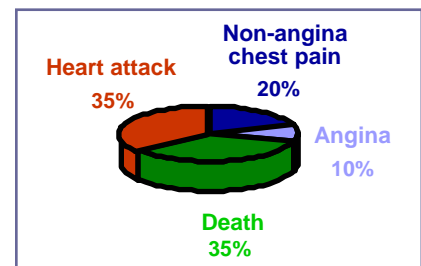
PTCA / Stenting Procedure

The proximal LAD 90% narrowing was successfully dilated & stented.

Teaching Points

- Coronary Artery Disease can present in many ways. Most commonly it presents as Left sided chest pain or discomfort with or without difficulty in breathing on exertion.
- The accuracy of the exercise stress test is approximately 60%, which means that 40% of patients with Coronary Artery Disease will actually have a normal exercise stress test.
- As shown in this case, the results of the MSCT Coronary Angiogram corresponded exactly with the findings of the invasive Coronary Angiogram done during PTCA/Stenting.
- As shown in the following chart, only 10% of heart patients have typical chest pain, whilst 20% have atypical chest pains as in this case. Another 70% present initially as heart attack or sudden death without history of previous chest pain.

What are the first signs or symptoms of heart disease?



Thaulow - American Journal of Cardiology; 1993:72:629