

# Coronary artery disease mimicking stroke

## Patient information

- 46 year old male with high cholesterol & triglycerides.
- Complains of Left Upper Limb weakness of 3 days duration.
- He was investigated for possibility of Stroke or Heart disease.
- CT Brain Perfusion Scan was normal.
- Exercise stress test was also negative for ischaemia.
- However, MSCT Coronary Angiography demonstrated a plaque in one of the major Coronary Arteries.

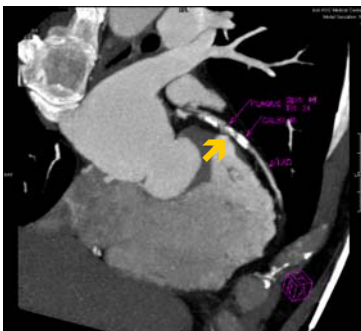
## MSCT Coronary Angiogram results:

Left Main: Normal  
LAD: Moderate calcific & non calcific plaque in mid LAD  
LCx: Normal  
RCA: Normal

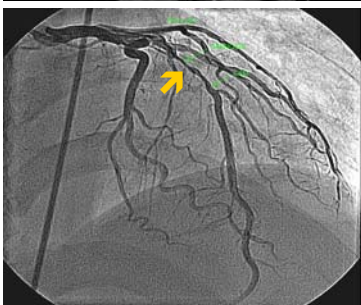
The patient was then advised to undergo a PTCA/ Stent to the mid-LAD

## Findings on invasive Coronary Angiography:

Left Main: Normal  
LAD: 90% stenosis of the mid LAD  
LCx: Normal  
RCA: Not cannulated due to anomalous origin. Noted to be normal on MSCT Coronary Angiogram



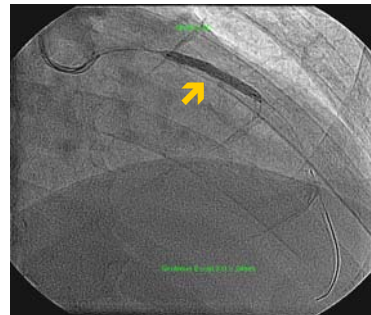
MSCT cor angio: calcific & non-calcific plaque mid-LAD (shown by arrow)



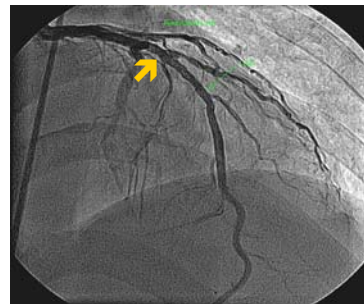
PRE-LAD: severe & long 80% stenosis mid-LAD (shown by arrow)

## PTCA / Stenting Procedure

A Bravo Balloon was used to dilate the mid-LAD 90% stenosed lesion. After successful dilatation of the mid-LAD lesion, a Sirolimus Excel Stent was deployed across the mid-LAD lesion with good result.



STENT-LAD



POST STENT (after stented): Mid-LAD 0% stenosis

## Teaching Points

- Coronary Artery Disease can present in many ways. Besides the more common left sided chest pain or discomfort, difficulty in breathing on exertion & epigastric pain, it can also manifest in the form of left arm numbness or weakness. Here at HSC, we are well equipped & able to investigate the patient thoroughly, thus we were able to rule out any possibility of stroke. With The MSCT Coronary Angiogram, we were able to diagnose a single vessel Coronary Artery Disease.
- As with many other such cases, the exercise stress test was normal. But as we know the accuracy of the exercise stress test is approximately 60%, which means that 40% of patients with Coronary Artery Disease will actually have a normal exercise stress test. Hence the need for a more reliable diagnostic tool.
- In this case, we are once again able to correlate the findings of both the MSCT Coronary Angiogram & the invasive Angiogram, yet again we find that both results are identical, once again proving that the MSCT Coronary Angiogram is an invaluable tool in the diagnosis of Coronary Artery Disease.